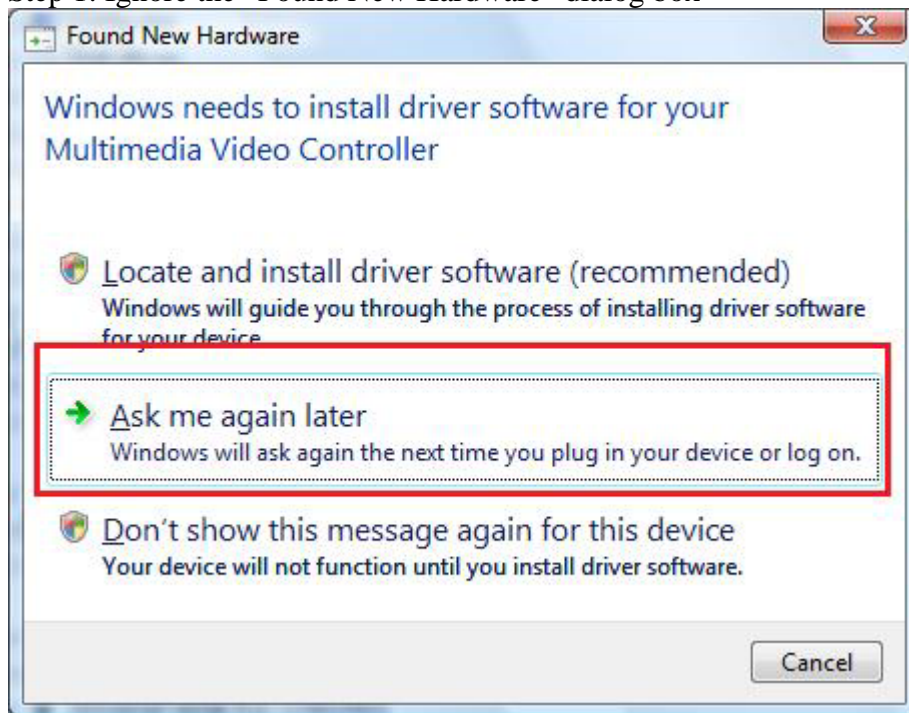
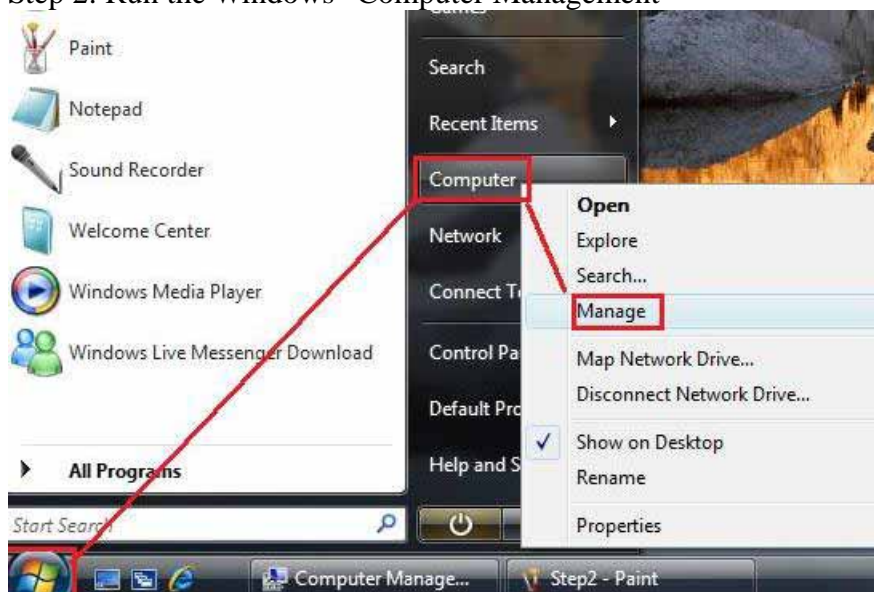


How to install device driver on Windows Vista X86:
For example: PVR3000 Deluxe

Step 1: Ignore the “Found New Hardware” dialog box

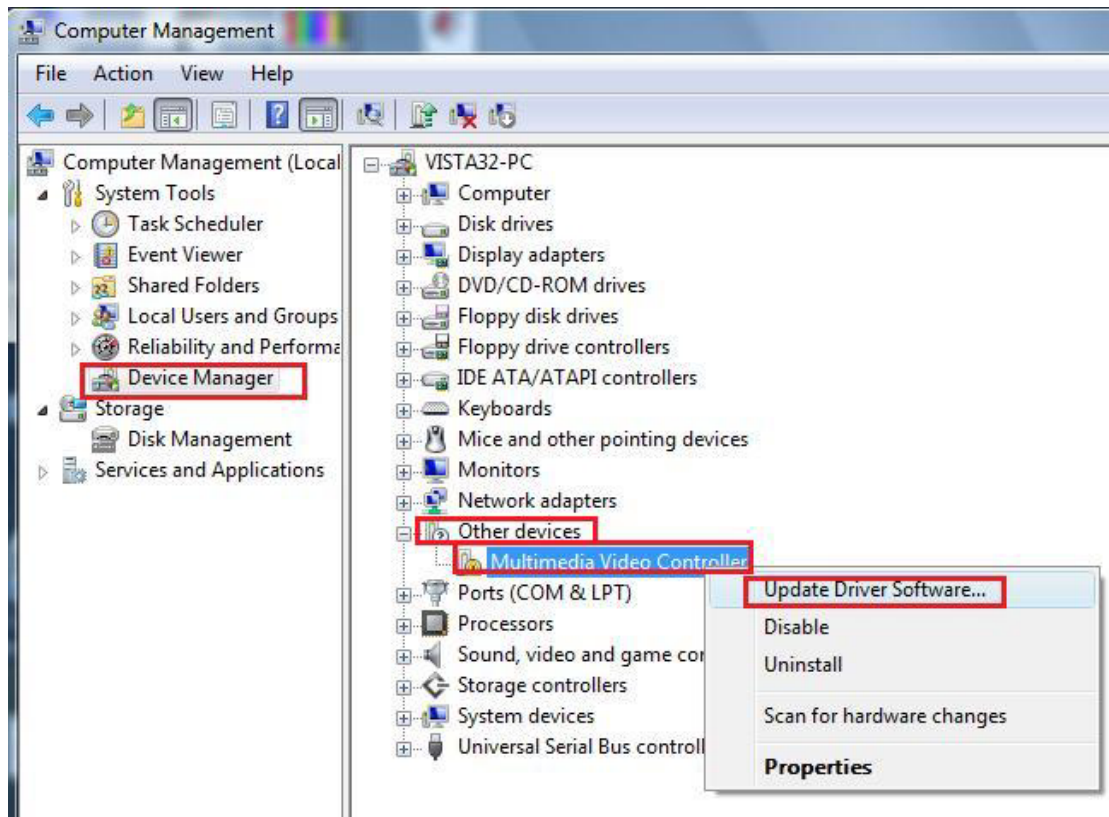


Step 2: Run the Windows “Computer Management”

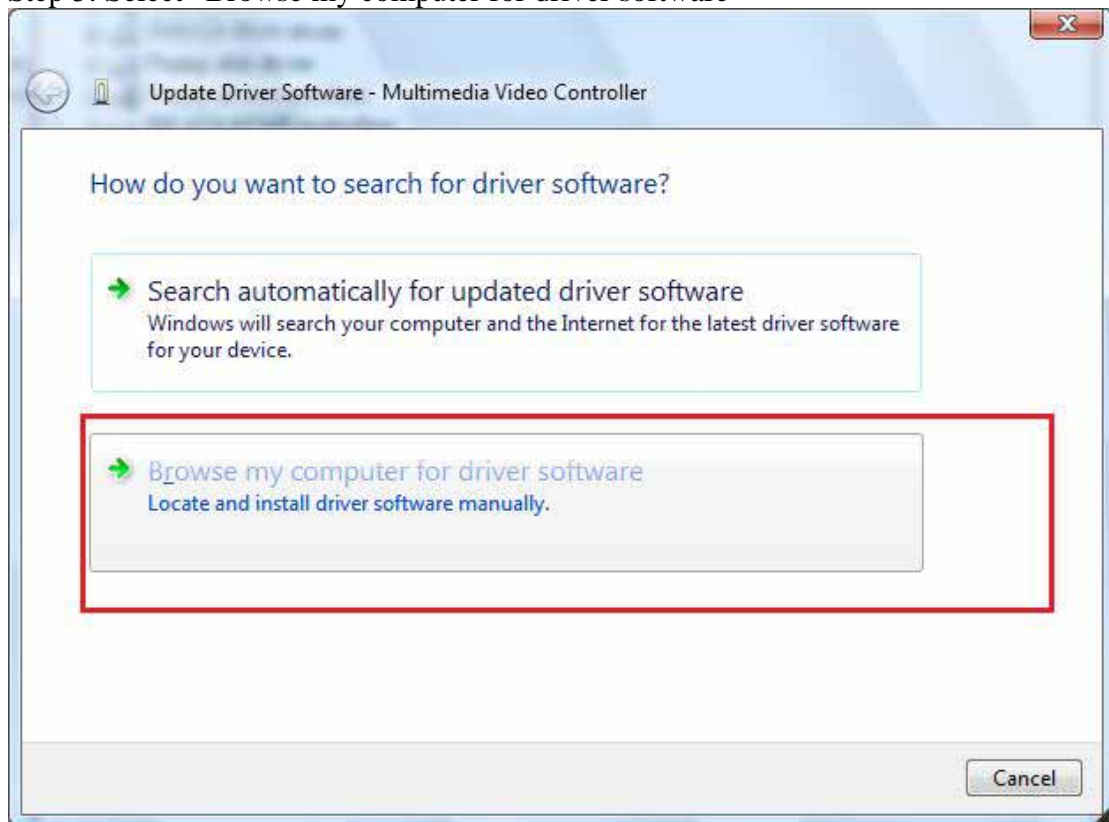


Step 3: Select “Continue” in the “User Account Control” dialog box to launch the “Computer Management”

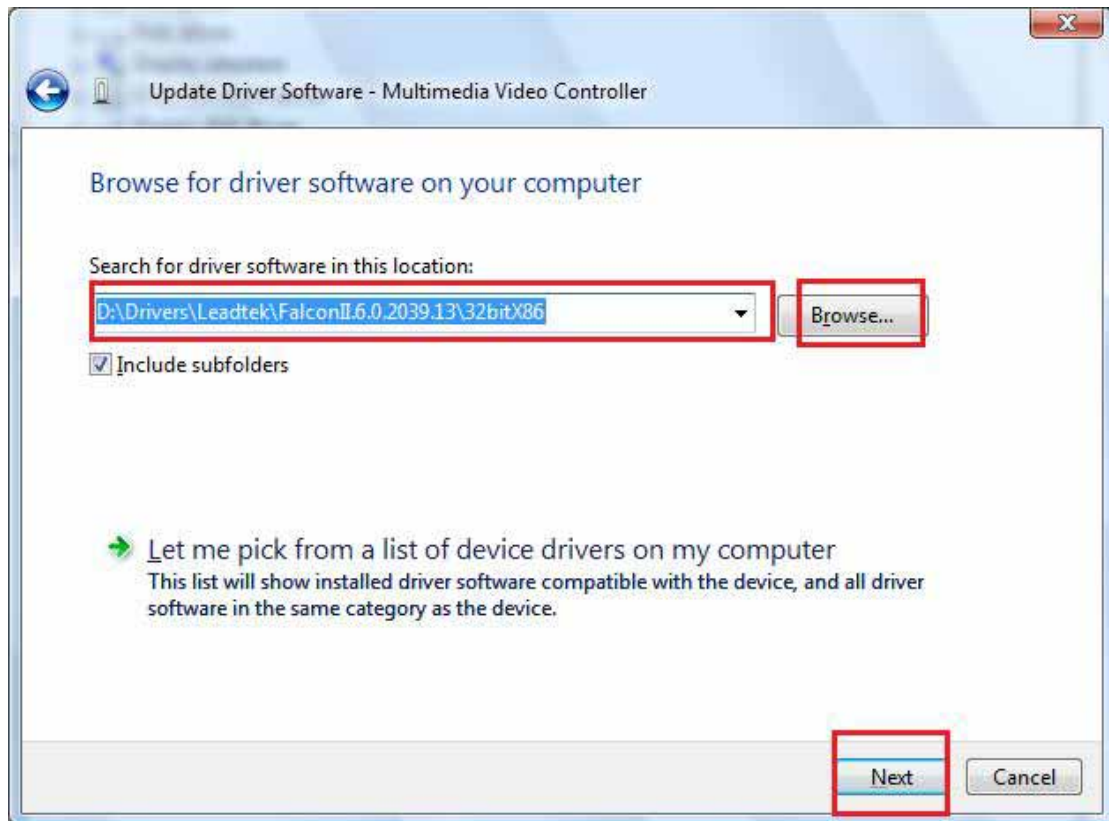
Step 4: “Update Driver Software” for the device from the “Device Manager” of “Computer Management”



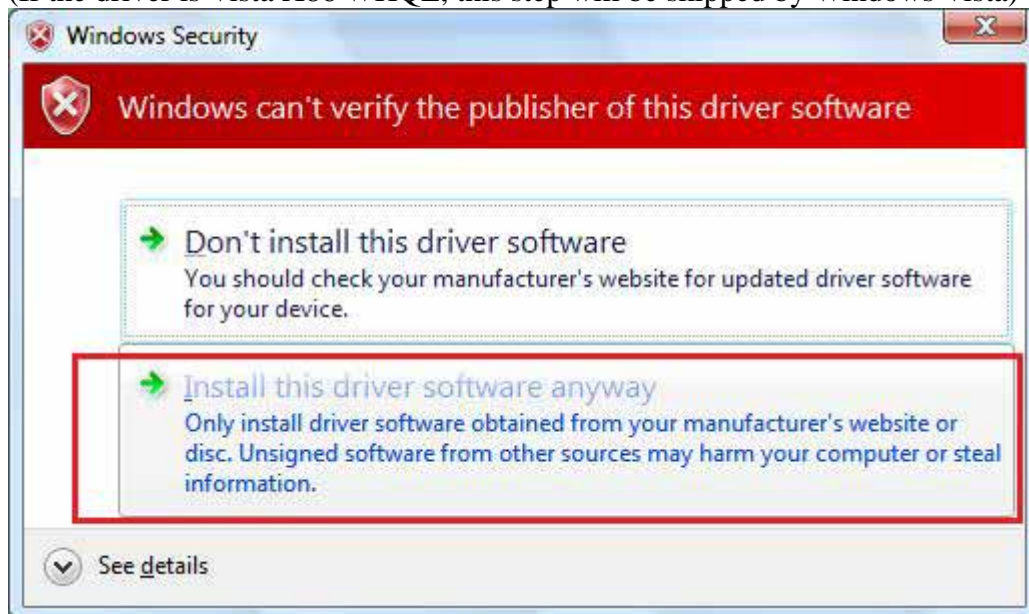
Step 5: Select “Browse my computer for driver software”



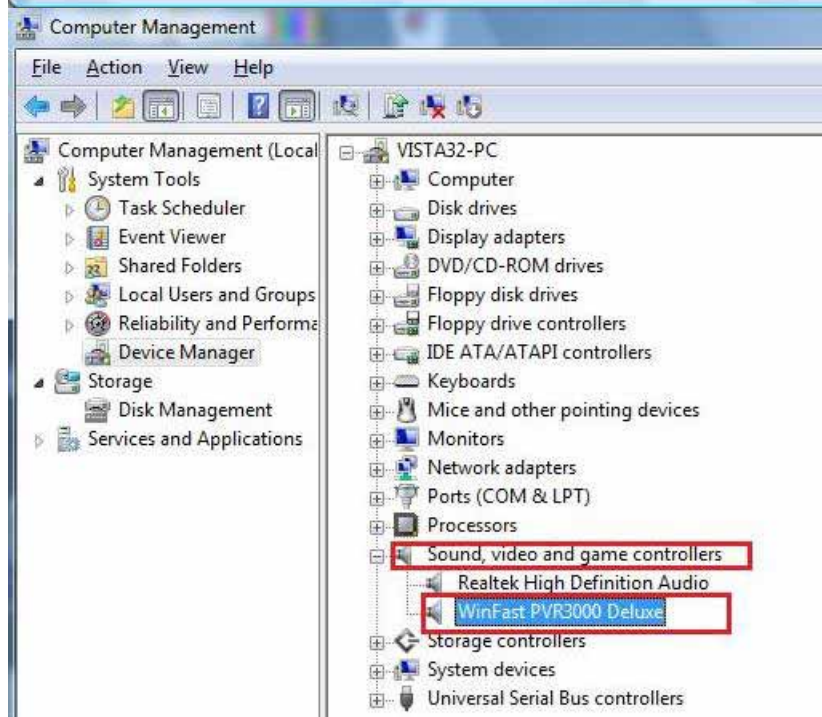
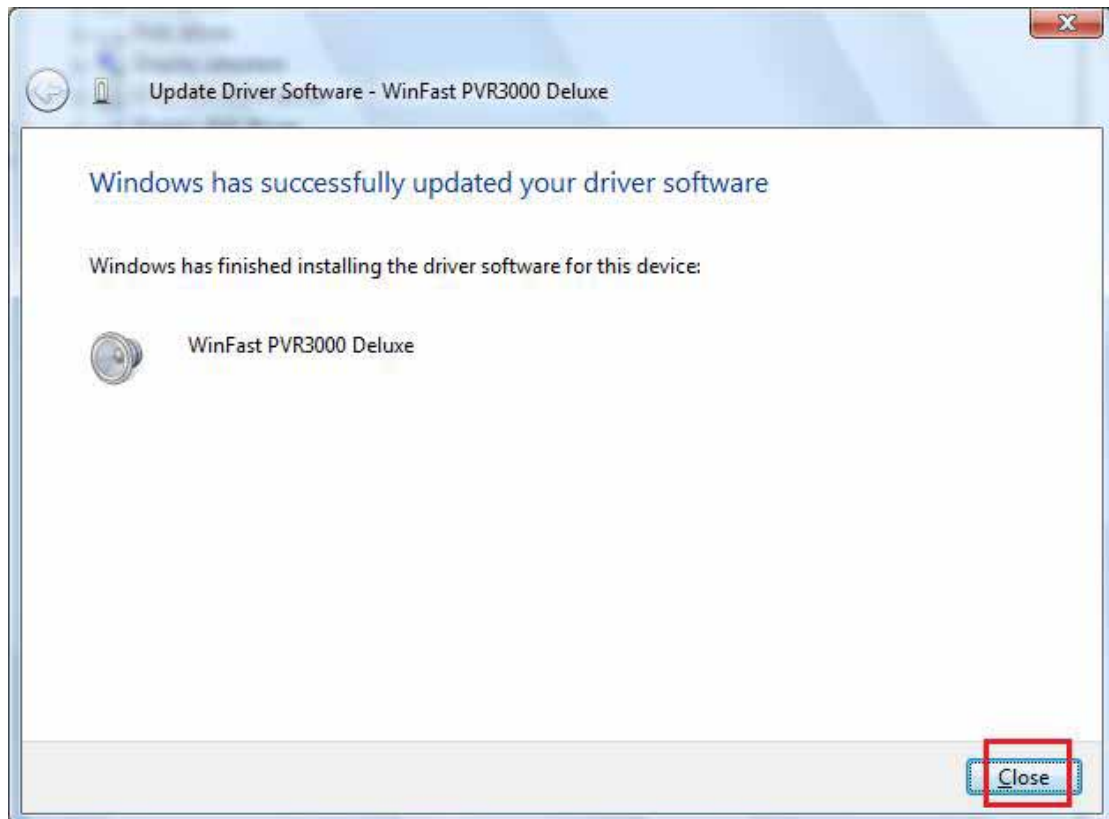
Step 6: Use the “Browse...” to select the folder of the driver for the device
(For example: PV3000 Deluxe)



Step 7: Select "Install this driver software anyway".
(If the driver is Vista X86 WHQL, this step will be skipped by Windows Vista)



Step 8: Driver is installed OK.



Step 9: Restart Windows Vista.